

The Shockspot-Chaturbate

Instruction Manual

www.shockspot.net



INSTRUCTION MANUAL

Index

I - Disclaimer

1.0 - Introduction

2.0 – Let's Get Started!

3.0 - Troubleshooting

Disclaimer

Please read the “Shockspot Instruction Manual” for machine assembly and general setup prior to the steps below. Read all steps below BEFORE enabling Chaturbate mode. Users must agree to the following terms before using the Shockspot System. The users of this software and Shockspot system understand this system is a novelty only device for visual simulation only. The Shockspot device produces a cyclical and vibrating motion that could be harmful if used improperly. The manufacturers and distributors of the Shockspot system shall not be held liable for any damages to property or body, directly or indirectly, resulting from the use of the Shockspot system or software. The user assumes full responsibility for the use of this system. The user holds harmless and indemnifies the manufacturer, affiliates and distributors from any and all liability. Users must at least 18 years of age. Users are made aware that the Shockspot system is comprised of metal framing and hinges which can cause a crushing action if the system is not setup or handled properly. The user agrees to become completely familiar with the system before its use. The user will not handle or use the system in a way to endanger person or property. The user agrees not to use or operate this system within six feet of people or pets that could be harmed by, or come in contact with the device. The Shockspot system utilizes 120-240 VAC for power and must only be used in dry locations. If the user is unsure of any of the terms in this agreement, he will not use the system. The user will not use or purchase this system in any region if for any reason this system is not legal. If you do not agree with these terms, do not use the Shockspot System.

1.0 Introduction

Please visit www.shockspot.net/resources/ to download the latest Shockspot software installation and manuals.

This manual details the software installation and control of the Shockspot Chaturbate application which allows the Shockspot to be controlled automatically based on tips received by viewers.

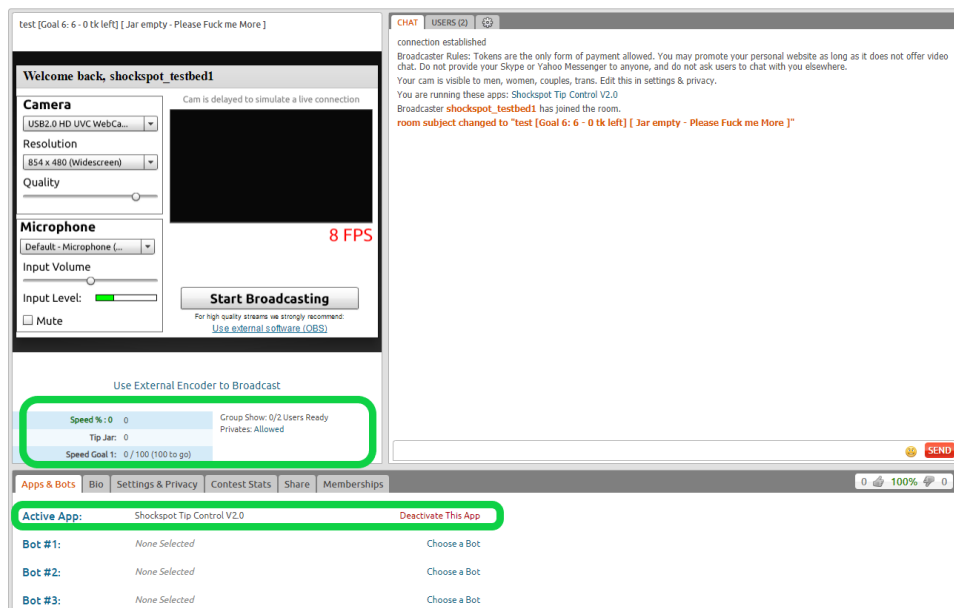
2.0 Let's get started

Warning!!! Your machine will respond to speed settings when the "Shockspot Control" application has the "Chaturbate Mode" enabled and the Shockspot is in "Run" mode. This will cause the machine speed to increase from its default zero speed based on your shockspot application settings on Chaturbate and the tips received.

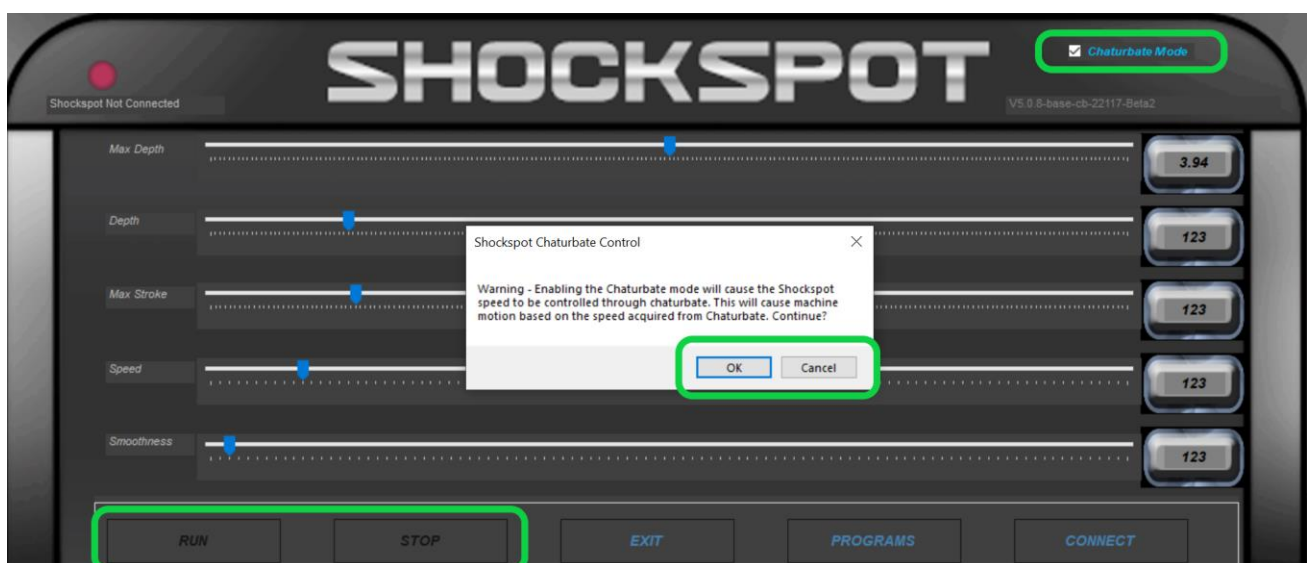
Please read the "Shockspot Instruction Manual" for machine assembly and general setup prior to the steps below. Read all steps below BEFORE enabling Chaturbate mode.

This "Chaturbate Monitoring" application must be used with the "Shockspot Chaturbate Control" application that controls the Shockspot Machine

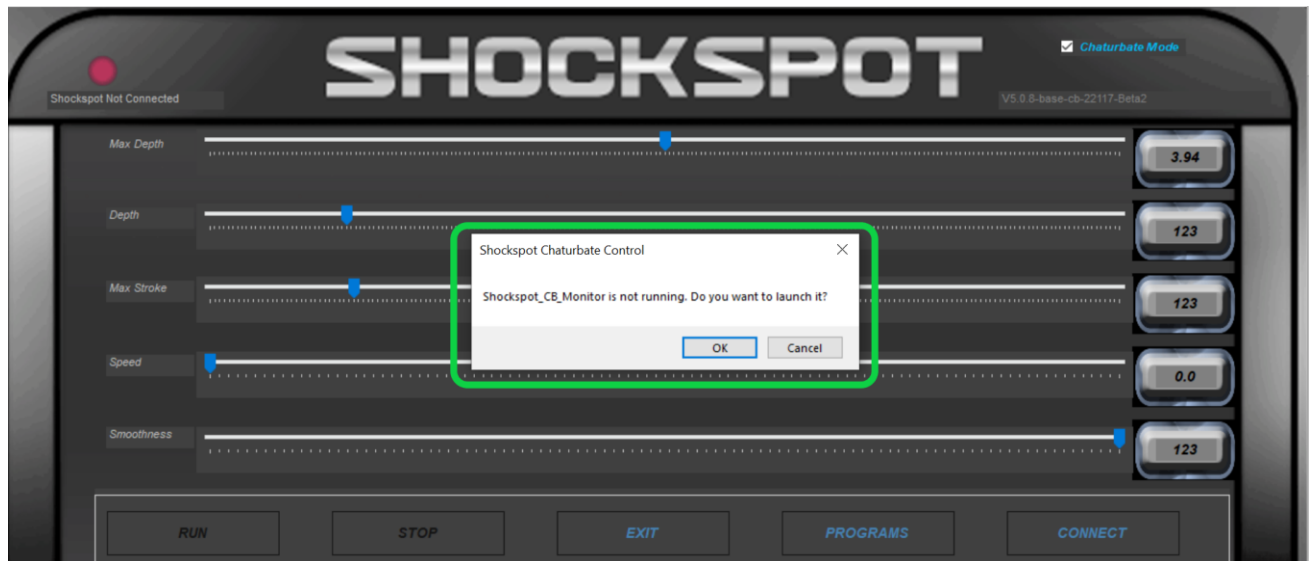
1. Open a web browser of your choice and log in to your Chaturbate account.
2. Select "BROADCAST YOURSELF" and activate the "Shockspot Tip Control V2.0" application on Chaturbate as shown below. The application name may vary from "Shockspot Tip Control V2.0" as the Shockspot applications are updated and added to Chaturbate. Your browser should appear as shown below. It is not necessary to start broadcasting at this moment; you should start broadcasting after the Shockspot application is launched in the following steps.



3. Connect the Shockspot USB cable to your PC and apply power.
4. Launch the “Shockspot_V5-0-8-Base-CAM Control” application from your desktop icon or from the Windows Start menu. Note: The shockspot application name may vary as the software is updated.
5. Test run the basic Shockspot machine operations prior to enabling Chaturbate mode.
6. Ensure you have internet access on your PC.
7. As shown below, enable “Chaturbate Mode” in the top right corner of the application. **Please note, the “Run” and “Stop” buttons will control the run state of the machine regardless of Chaturbate mode.** When enabling Chaturbate mode, if the Shockspot is in “Run Mode” it will respond to speed commands from Chaturbate tips. You must be aware that if Chaturbate is at “Speed % 0”, the Shockspot will not be moving. Based on your settings in your Shockspot, it will respond automatically to tips received in your chat room.

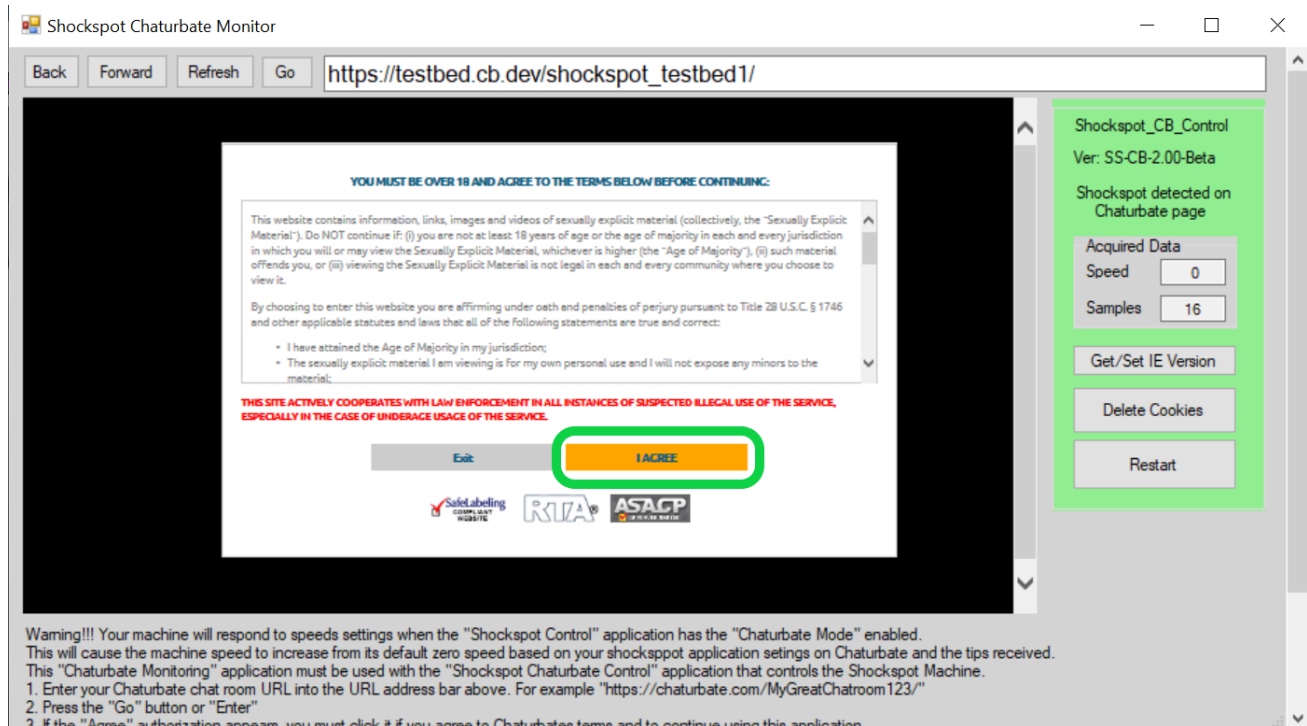


8. If the “Shockspot Chaturbate Monitor” application is not already running, you will see the following notification. Select “OK” to launch it.

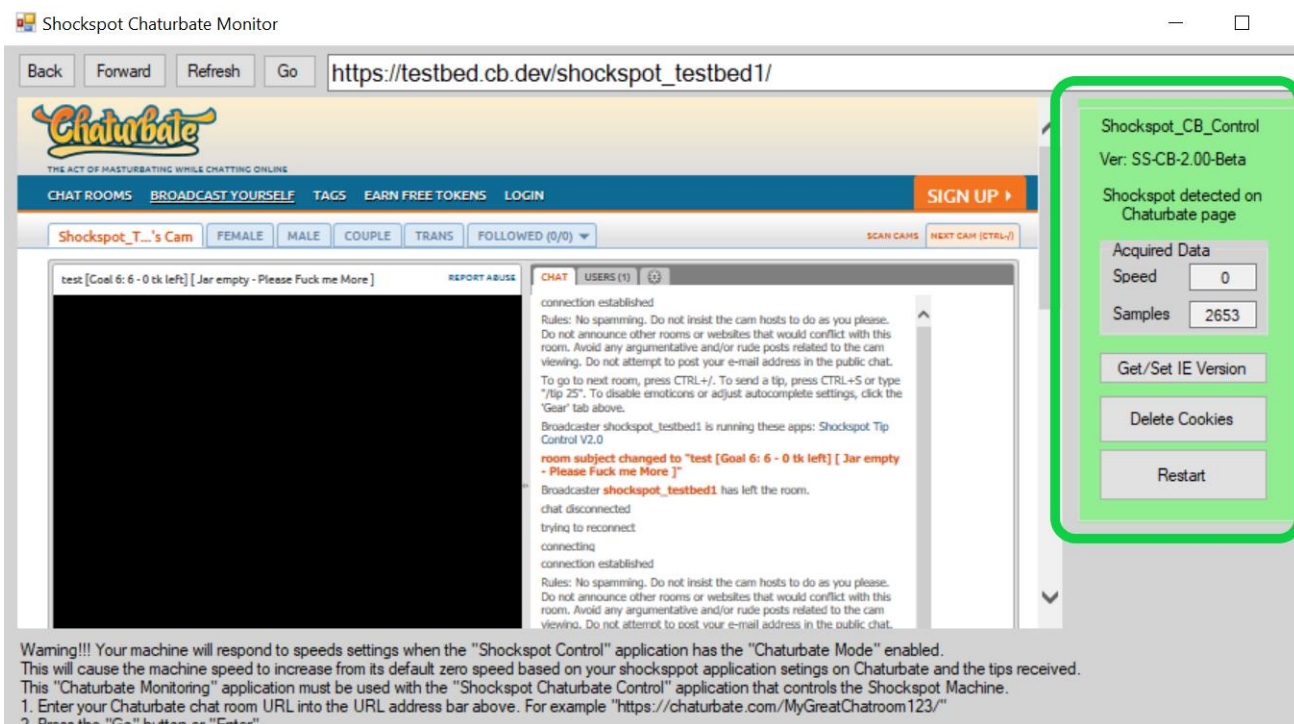


9. The “Shockspot Chaturbate Monitor” application will appear as shown below.

Note! The Shockspot Chaturbate Monitor application is only for monitoring your broadcast on Chaturbate. Please do not log into your account from this application and do not broadcast from this application. You will use your normal browser of your choice to broadcast your chat room as you normally do, not the Shockspot-Chaturbate application you are using in this step. The video will not update in the monitoring application, only the Shockspot associated parameters will be monitored and passed to the Shockspot Control application automatically. You must accept the terms to use the application by clicking “I AGREE” to allow the application to monitor Chaturbate.



10. Enter your Chaturbate chat room URL into the URL address bar at the top of the Shockspot-Chaturbate Monitor application. For example, "https://chaturbate.com/MyGreatChatroom123/" (Above we show "https://testbed.cb.dev/shockspot_testbed1/" as our test page) Your URL will be automatically populated in this application each time it is launched thereafter.
11. Press the "Go" button or "Enter" to load the url.
12. If the "Agree" authorization appears, you must click it if you agree to Chaturbate's terms and to continue using this application.
13. Do not log in to your Chaturbate account in this application, this is a monitoring application only. You will not be broadcasting from this application.
14. **If you have not already done so, using a separate web browser**, log in to your Chaturbate account and continue as you would normally broadcast. (Your broadcast page URL should be in the address bar above)
15. When the Shockspot Application is active on your Chaturbate broadcast page, the "Samples and Speed" box on the right side of the Shockspot Chaturbate application will turn green as shown below. If it does not turn green when the Shockspot application is activated on your Chaturbate page and you have entered your correct chat room address in the URL, please check your settings.



16. The "Samples" field at the top right should increment every three seconds while this application is running and collecting data from your Chaturbate broadcast page.
17. The "Speed" field will display the speed corresponding to the speed displayed in your Shockspot "Speed %" in your Chaturbate broadcast window.
18. The "Speed" field will update automatically based on tips in your Chaturbate chat room. The speed is based on your settings in the Chaturbate application running on your broadcast page.
19. The "Get/Set IE Version" button can be used to set this applications web browser to the IE version installed on your PC. This is not normally required and only needs to be run once if at all. If your application has any issues displaying the web content please press this button and restart the application.
20. The "Delete Cookies" button can be used to delete cookies from the Shockspot Chaturbate application. This is not normally necessary but can be used if you experience any stored web browser issues.
21. The "Restart" button can be used to restart the application if desired.

3.0 – Troubleshooting

This section covers the most common problems and solutions with the Shockspot Chaturbate application. Most problems with the Shockspot are simple communication issues that can be resolved quickly and easily.

The first step is to make sure that power is connected to your Shockspot and you have a green indicator light on the bottom of the thrusting mechanism. If the green indicator is not visible and you have verified the power supply is connected, please contact support@shockspot.net.

3.1 “Registered Shockspot Found” but “Shockspot Not Connected” is Displayed When Trying to Connect



If you get this message when you click the connect button the most likely problem is that the port number assigned in your PC is greater than 5. This is a very easy fix for Windows.

This message is indicating that a registered Shockspot Machine is connected through USB, but a communication link is not established properly as a result of the COM port assigned a value greater than 5.

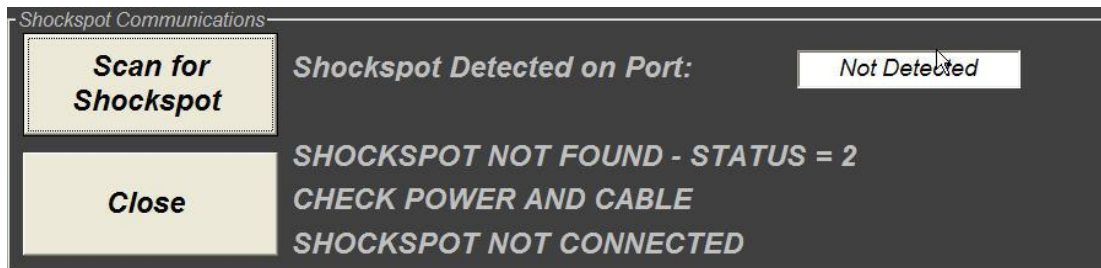
Follow these steps to resolve this issue:

Make sure your Shockspot System is connected to your PC when performing this configuration!

Navigate to the "Control Panel" and select "Device Manager" you will see a list of devices on your PC.

- a) Expand the "Ports (COM & LPT)" settings and verify that "USB Serial Port (COMx)" appears in the list. For example "USB Serial Port (COM23)", where the "23" is the COM port that has been assigned. (If the assigned COM port is 5 or less, please go to section 9.2 of this manual and follow the steps for driver installation)
- b) Double click the "USB Serial Port (COMx)" and select the "Port Settings" tab then select the "Advanced" tab.
- c) Set the "COM Port Number" to a value of 5 or less. Select lower numbers to allow the software to recognize the Shockspot System faster.
- d) Select "OK" to accept the settings and return to the "Device Manager". You must disconnect, then reconnect the USB cable for the new settings to take effect. Your Shockspot is now ready to run.

3.2 – “Shockspot Not Found” and “Shockspot Not Connected” is Displayed When Trying to Connect



If you get this message when you click the connect button the most likely problem is that the driver is not installed for the Shockspot communication hardware. The drivers for Windows 7 through 10 are included in the Shockspot setup files.

This message is indicating that communication to a registered Shockspot Machine can not be found, Follow these steps to resolve this issue:

Make sure your Shockspot System is connected to your PC when performing this configuration!

Navigate to the "Control Panel" and select "Device Manager" you will see a list of devices on your PC.

- a) Install the communication drivers as described in section 5.0
- b) This will install the proper driver for the Shockspot and should install the USB serial port as well.
- c) When this step completes, you must go back to the "Device Manager" and verify the settings under the "Ports (COM & LPT)" you should see "USB Serial Port" listed.
- d) Verify that "USB Serial Port (COMx)" appears in the list. For example "USB Serial Port (COM2)", where the "2" is the COM port that has been assigned.

The COM port assigned must be 5 or less! If not, please follow the next steps.

- a) Double click the "USB Serial Port (COMx)" and select the "Port Settings" tab, then select the "Advanced" tab.
- b) Set the "COM Port Number" to a value of 5 or less. Select lower numbers to allow the software to recognize the Shockspot System faster
- c) Select "OK" to accept the settings and return to the Device manager. You must disconnect, then reconnect the USB cable for the new settings to take effect. Your Shockspot is now ready to run.

For additional troubleshooting guides and tutorials, please visit:

www.shockspot.net/resources/

If you have any questions, please email support@shockspot.net